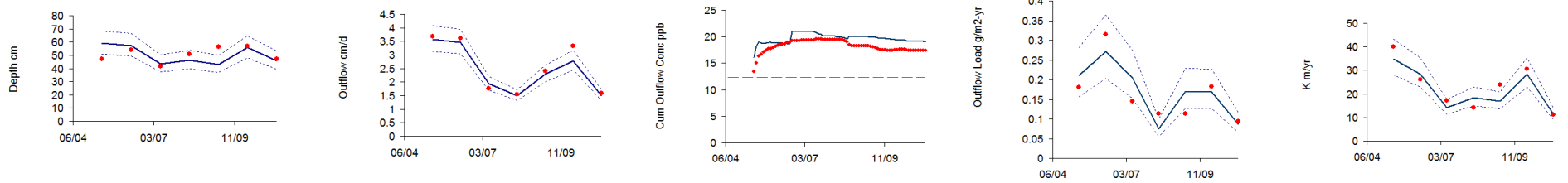


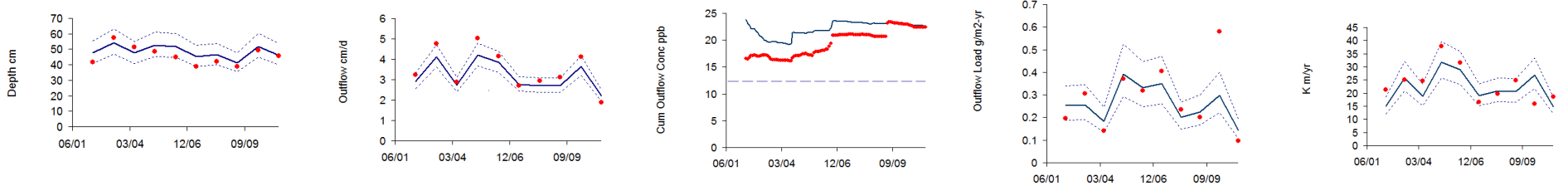
Response Variables, 360-Day Averages

	Mean Depth	Outflow Volume	FWM Outflow P Concentration	Outflow P Load	Steady-State K
--	------------	----------------	-----------------------------	----------------	----------------

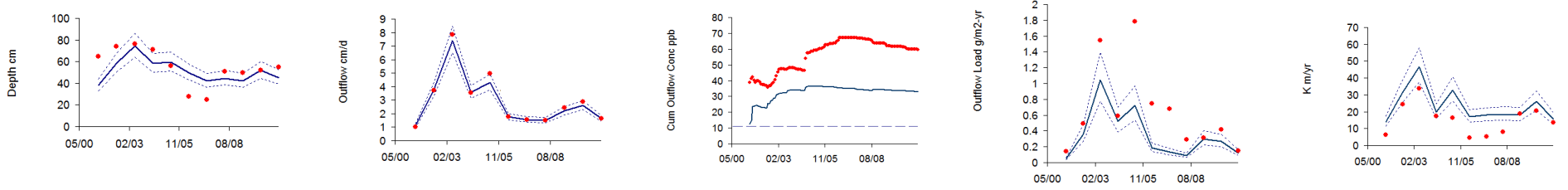
STA-34 [Details](#) [Operation](#) [Performance](#)



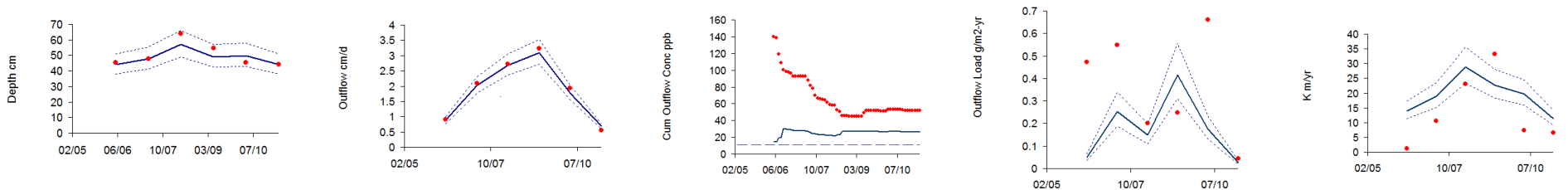
STA-2, Cells 1-3 [Details](#) [Operation](#) [Performance](#)



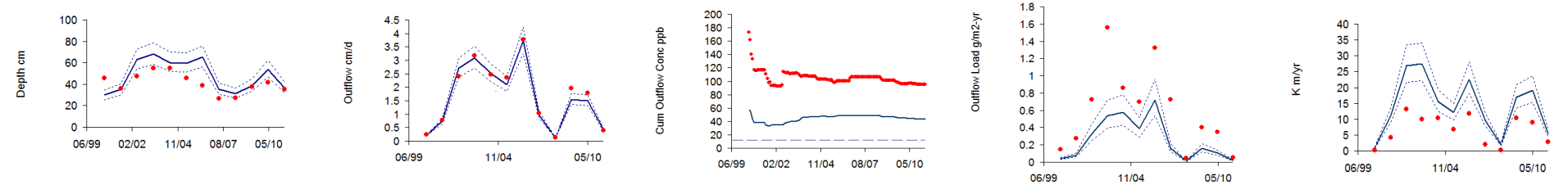
STA-1W [Details](#) [Operation](#) [Performance](#)



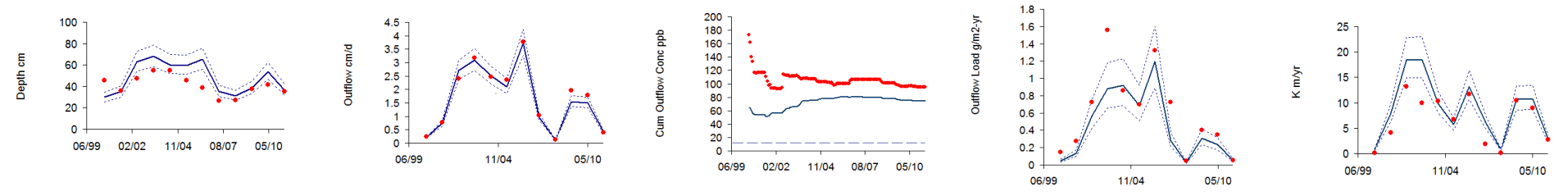
STA-1E, West & Central Flow Paths [Details](#) [Operation](#) [Performance](#)



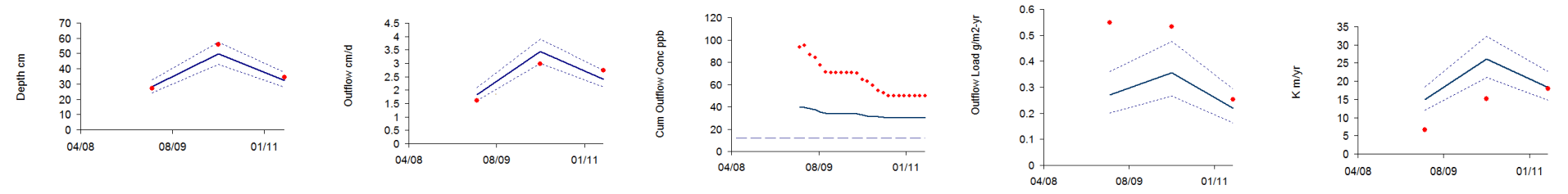
STA-5, North & Central Flow Paths, PEW Calibration [Details](#) [Operation](#) [Performance](#)



STA-5, North & Central Flow Paths, Emergent Calibration [Details](#) [Operation](#) [Performance](#)



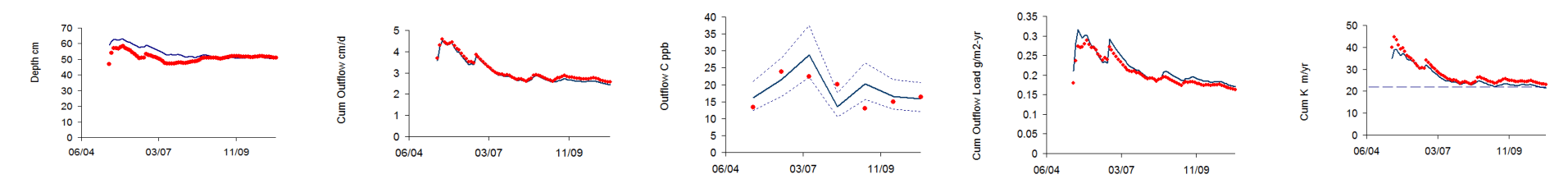
STA-6, Cells 2, 3, & 5 [Details](#) [Operation](#) [Performance](#)



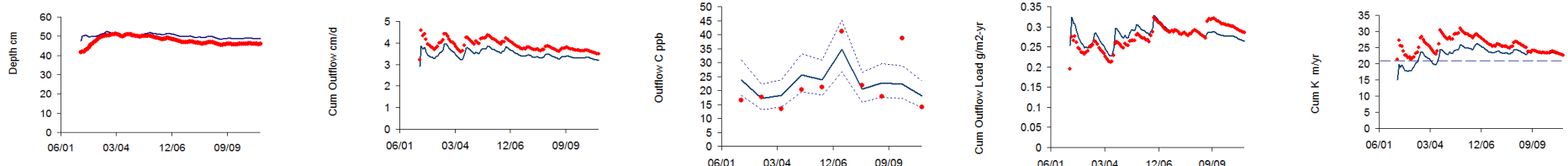
Response Variables Variables, Cumulative Averages

Cum Mean Depth	Cum Outflow Volume	Cum FWM Outflow P Conc.	Cum Outflow P Load	Cum Steady-State K
----------------	--------------------	-------------------------	--------------------	--------------------

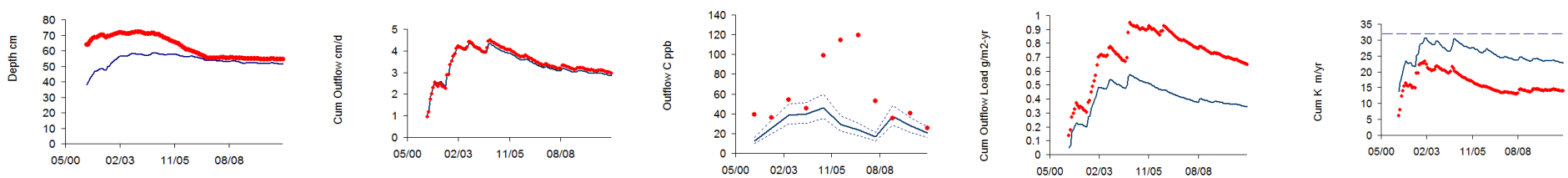
STA-34 [Details](#)



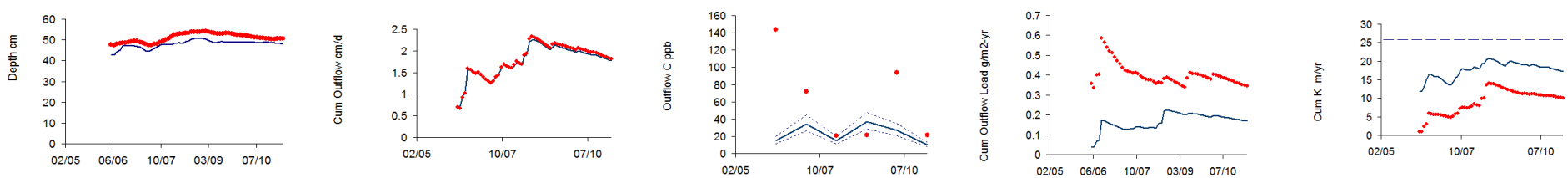
STA-2, Cells 1-3 [Details](#)



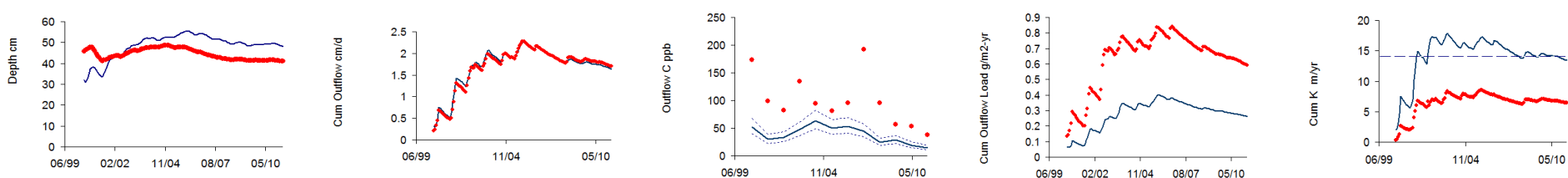
STA-1W [Details](#)



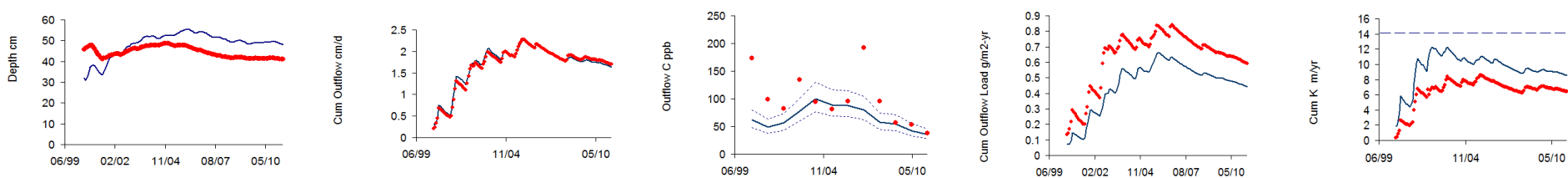
STA-1E, West & Central Flow Paths [Details](#)



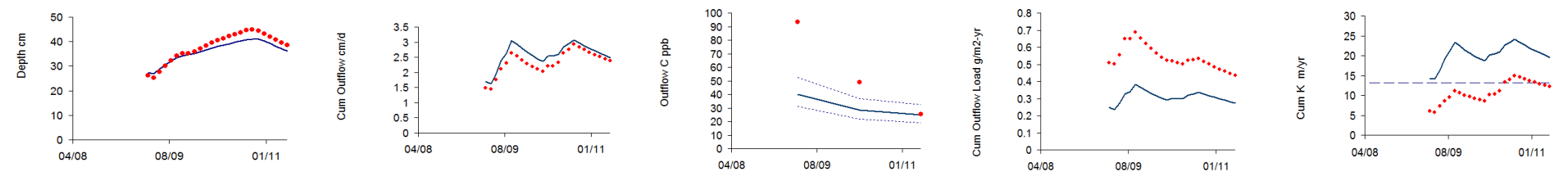
STA-5, North & Central Flow Paths, PEW Calibration [Details](#)



STA-5, North & Central Flow Paths, Emergent Calibration [Details](#)



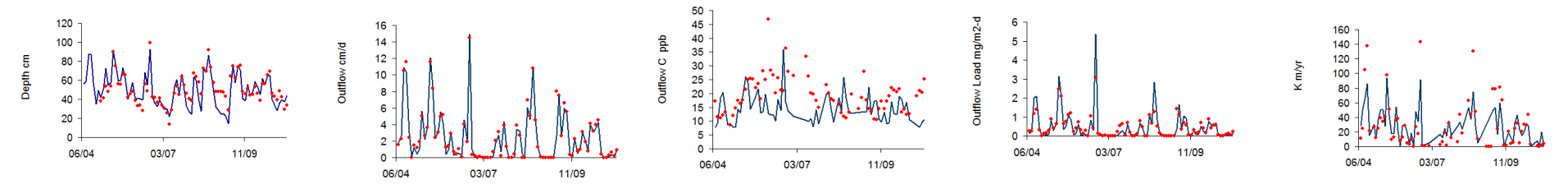
STA-6, Cells 2, 3, & 5 [Details](#)



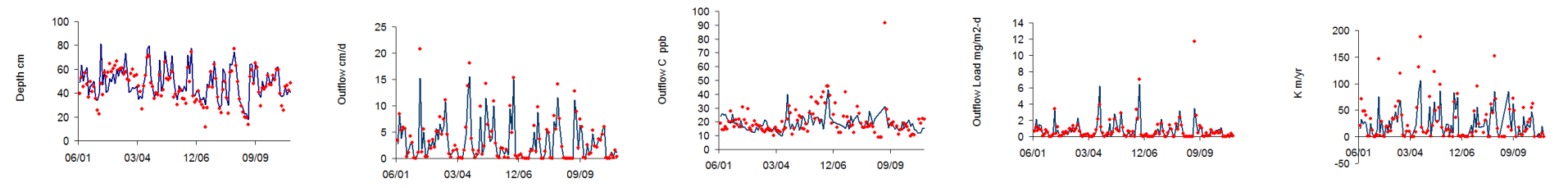
Response Variables, 30-Day Averages

Mean Depth	Outflow Volume	FWM Outflow P Concentration	Outflow P Load	Steady-State K
------------	----------------	-----------------------------	----------------	----------------

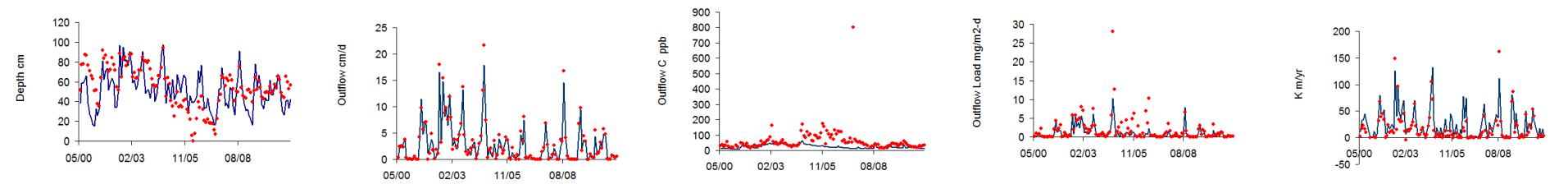
STA-34 [Details](#)



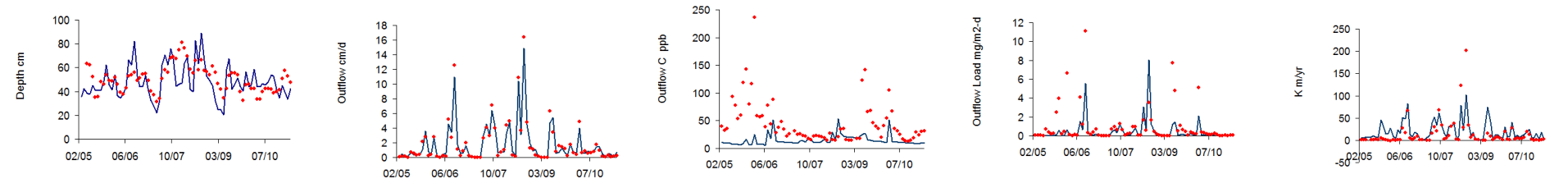
STA-2, Cells 1-3 [Details](#)



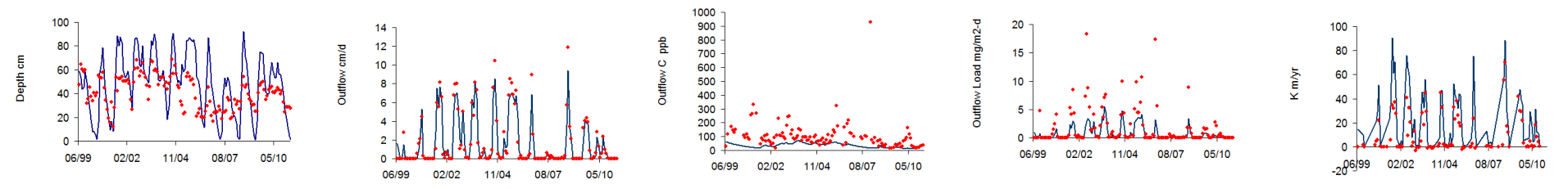
STA-1W [Details](#)



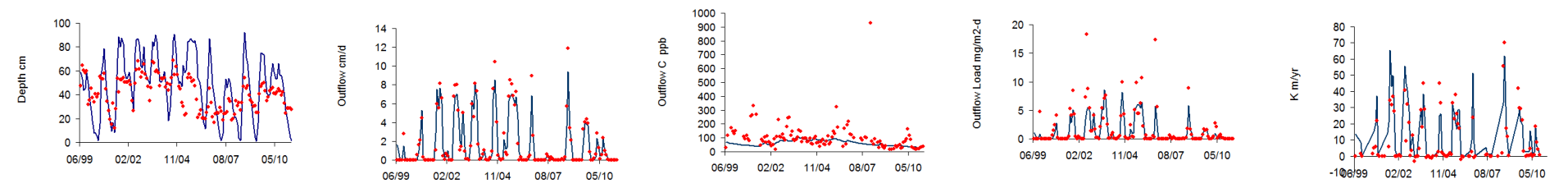
STA-1E, West & Central Flow Paths [Details](#)



STA-5, North & Central Flow Paths, PEW Calibration [Details](#)



STA-5, North & Central Flow Paths, Emergent Calibration [Details](#)

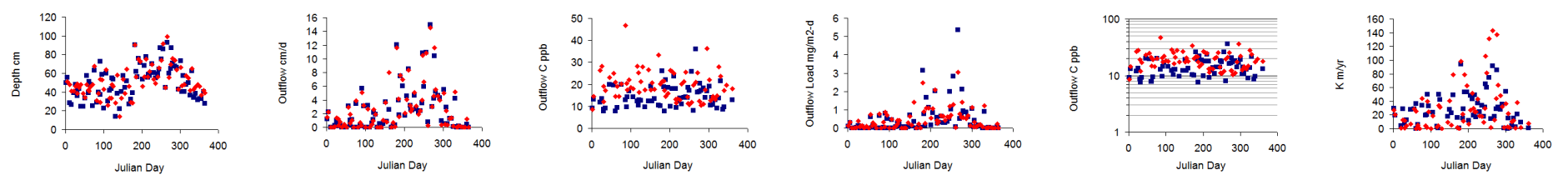


STA-6, Cells 2, 3, & 5 [Details](#)

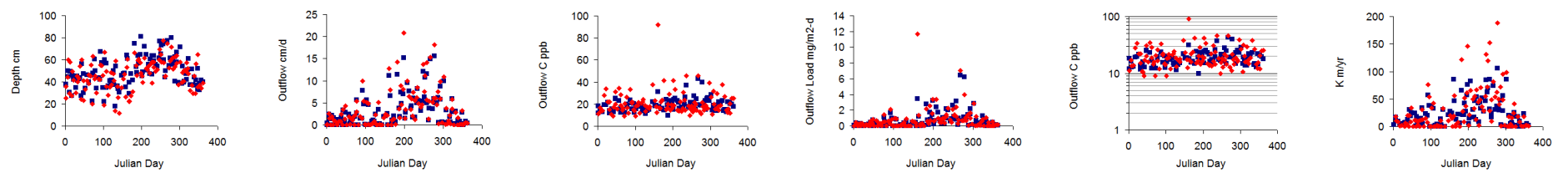
d 46tr>  
Seasonal Variations, 30-Day Averages

Mean Depth	Outflow Volume	Outflow P Conc	Outflow P Load	Outflow P Conc - Log	Steady-State K
------------	----------------	----------------	----------------	----------------------	----------------

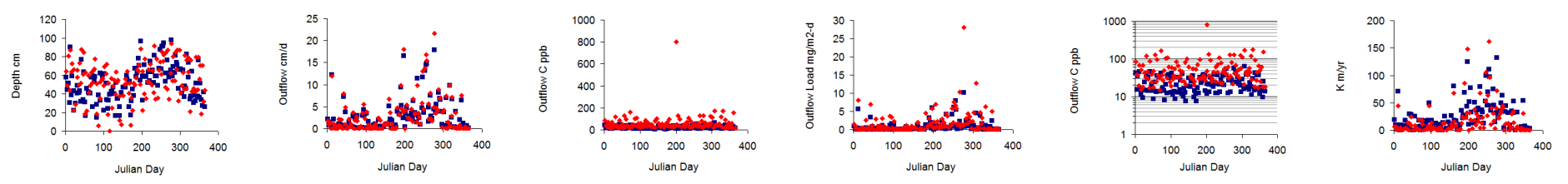
STA-34 [Details](#)



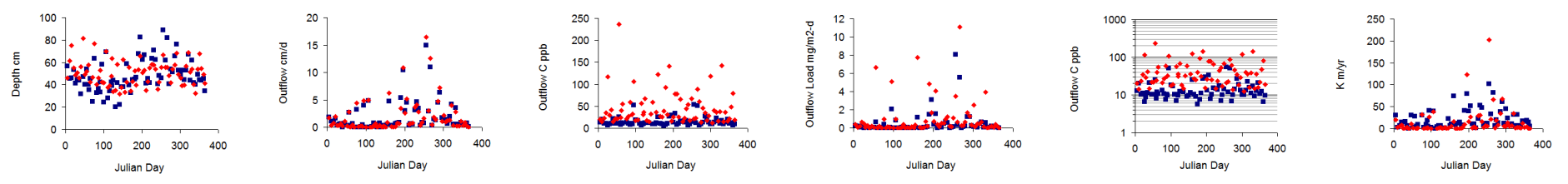
STA-2, Cells 1-3 [Details](#)



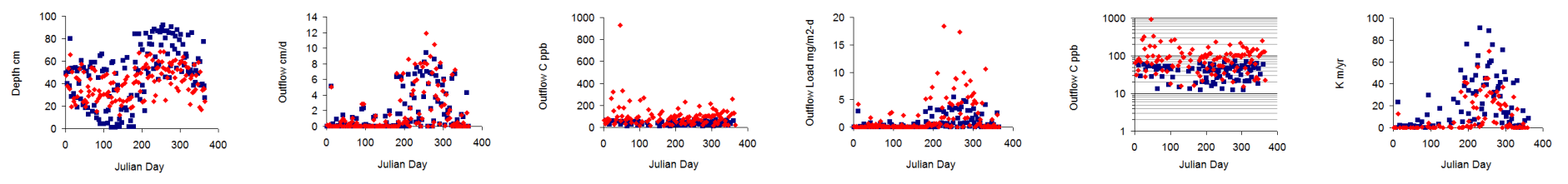
STA-1W [Details](#)



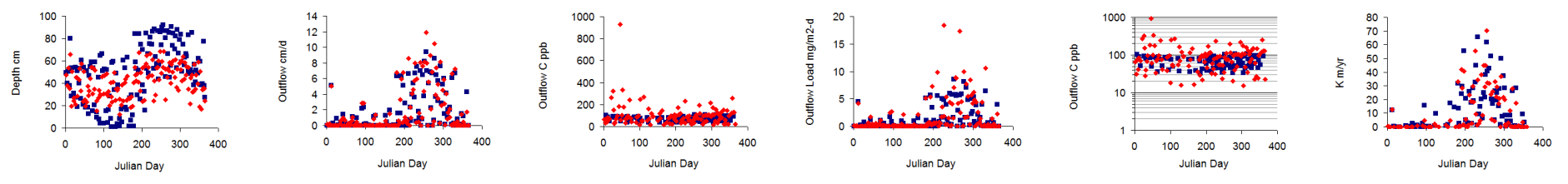
STA-1E, West & Central Flow Paths [Details](#)



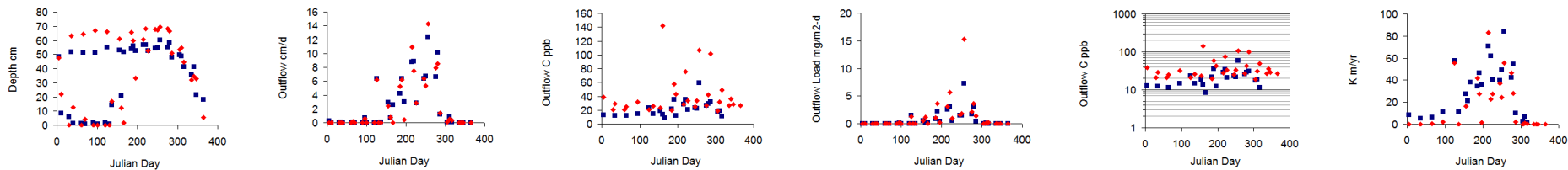
STA-5, North & Central Flow Paths, PEW Calibrations [Details](#)



STA-5, North & Central Flow Paths, Emergent Calibration [Details](#)



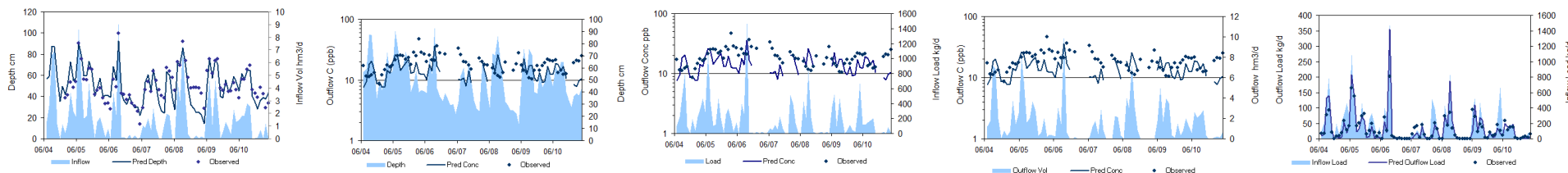
STA-6, Cells 2, 3, 5 [Details](#)



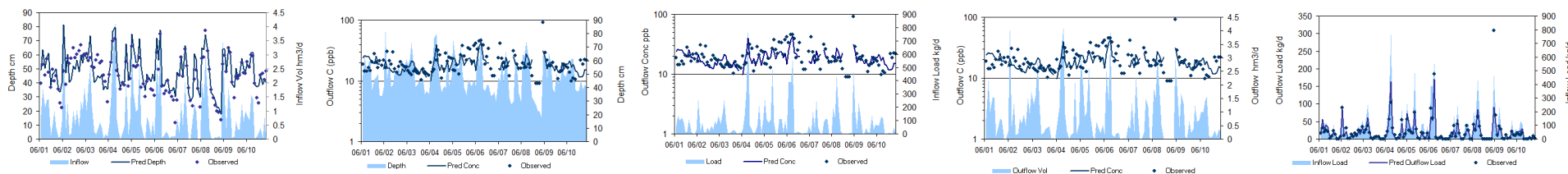
Dynamic Response Charts - 30-Day Averages

Depth & Inflow	Depth & Outflow Conc	Inflow Load & Outflow Conc	Outflow Volume & Outflow Conc	Inflow Load & Outflow Load
----------------	----------------------	----------------------------	-------------------------------	----------------------------

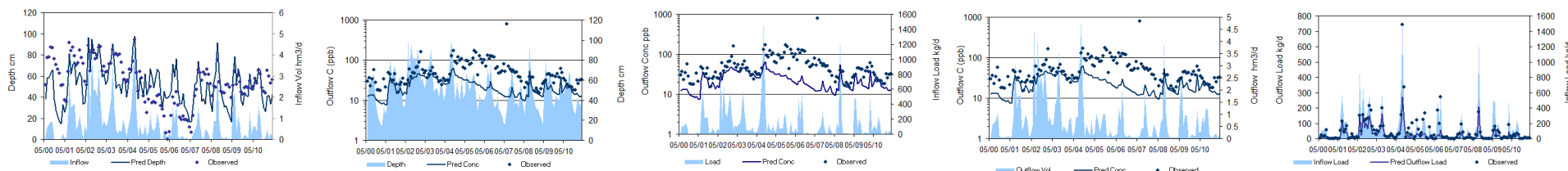
STA-34



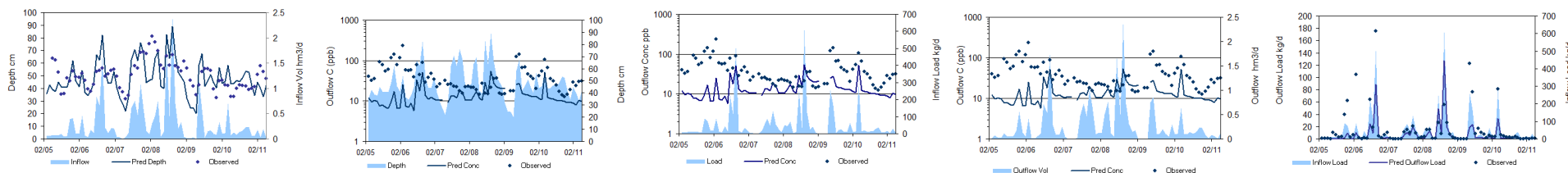
STA-2, Cells 1-3



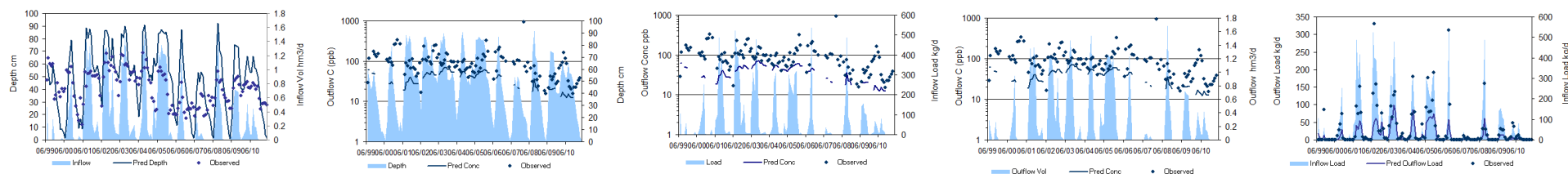
STA-1W



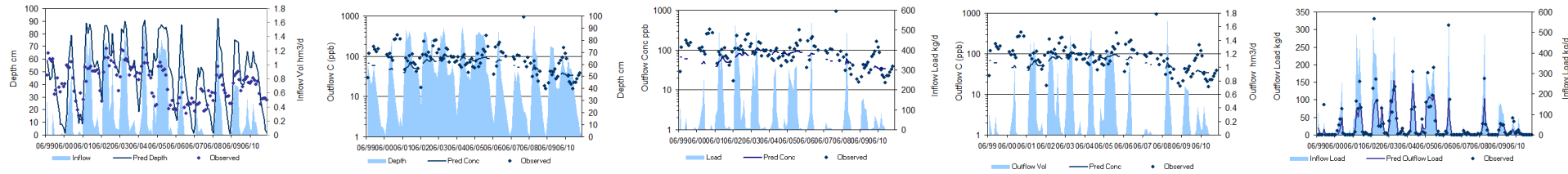
STA-1E, West & Central Flow Paths



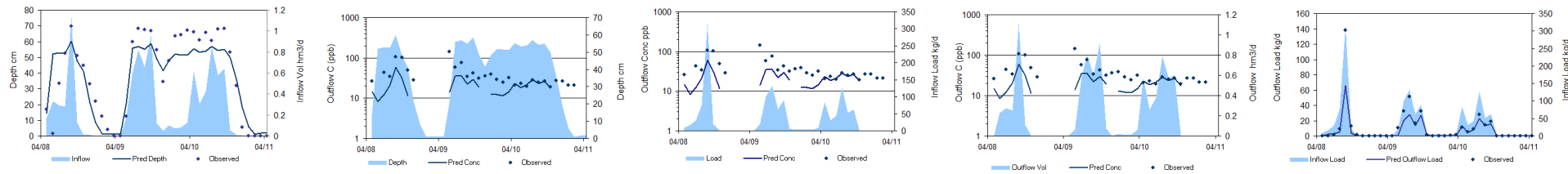
STA-5, North & Central Flow Paths, PEW Calibration



STA-5, North & Central Flow Paths, Emergent Calibration



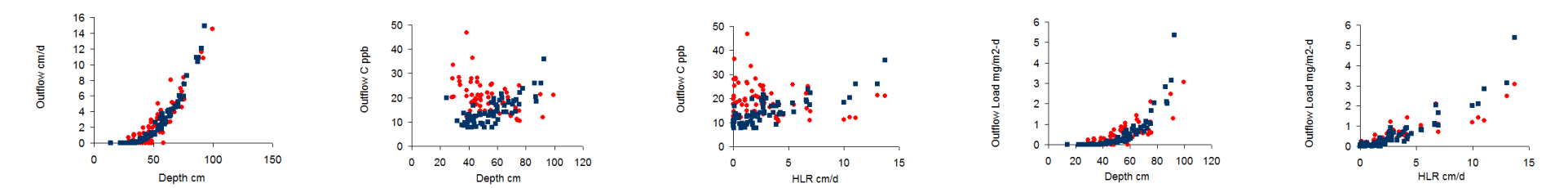
STA-6, Cells 2, 3, & 5



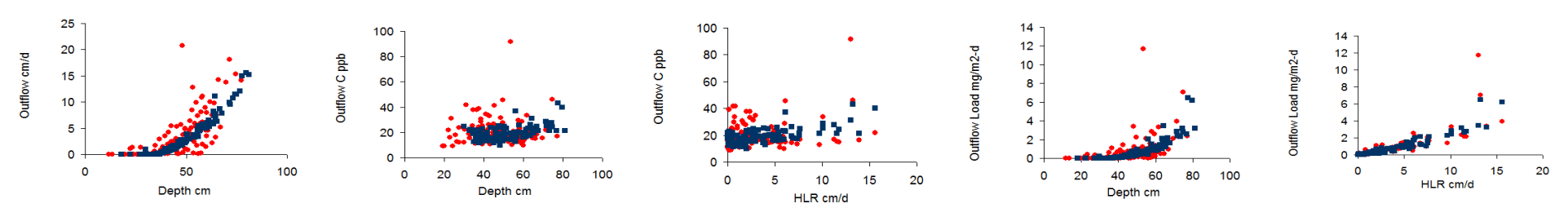
Diagnostic Scatter Charts - Blue Symbols = Predicted, Red = Observed, 30-Day Averages

Outflow Volume vs. Depth	Outflow Conc vs. Depth	Outflow Conc vs. Hydraulic Load	Outflow P Load vs. Depth	Outflow P Load vs. Hydraulic Load
--------------------------	------------------------	---------------------------------	--------------------------	-----------------------------------

STA-34 [Details](#)

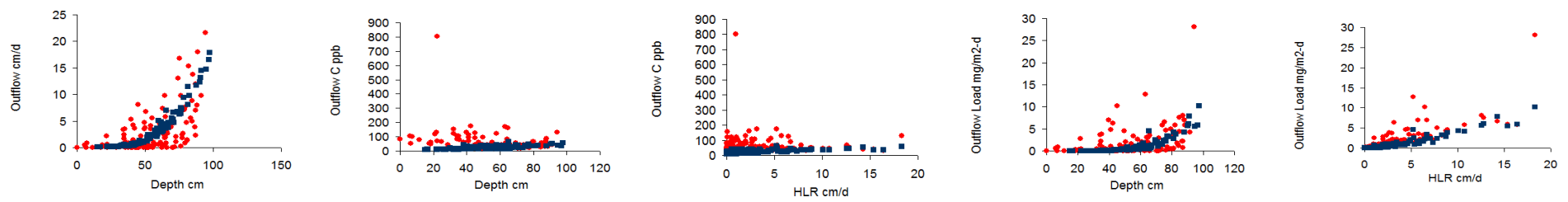


STA-2, Cells 2-5 [Details](#)

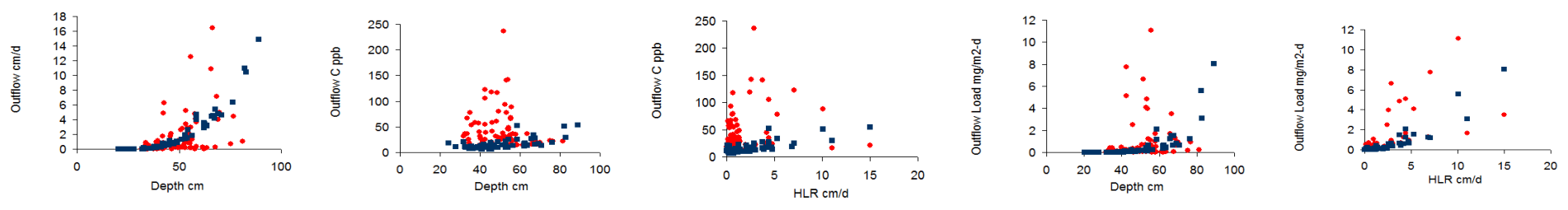


STA-1W [Details](#)

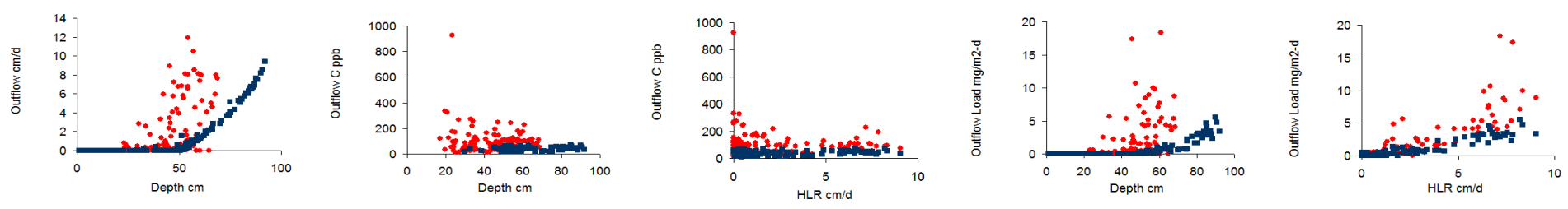




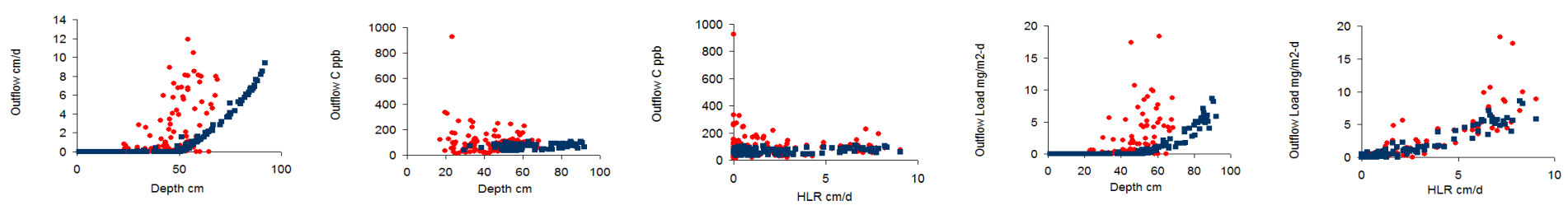
STA-1E, West & Central Flow Paths [Details](#)



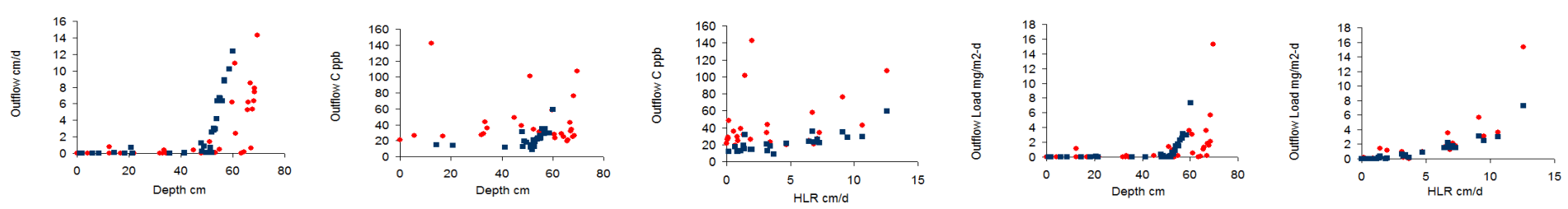
STA-5, North & Central Flow Paths, PEW Calibrations [Details](#)



STA-5, North & Central Flow Paths, Emergent Calibration [Details](#)



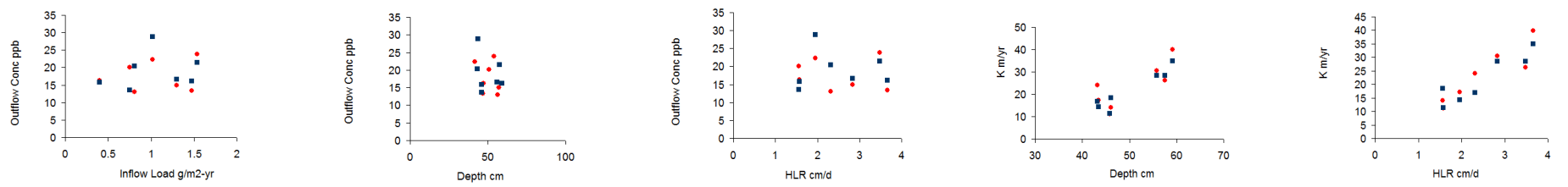
STA-6, Cells 2, 3, & 5 [Details](#)



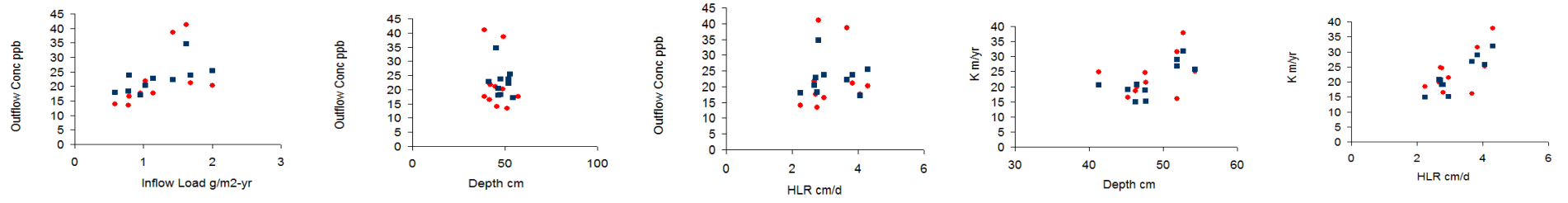
Diagnostic Scatter Charts - Blue Symbols = Predicted, Red = Observed, 360-Day Averages

Outflow Conc vs. P Load	Outflow Conc vs. Depth	Outflow Conc vs. Hydraulic Load	K vs. Depth	K vs. Hydraulic Load
-------------------------	------------------------	---------------------------------	-------------	----------------------

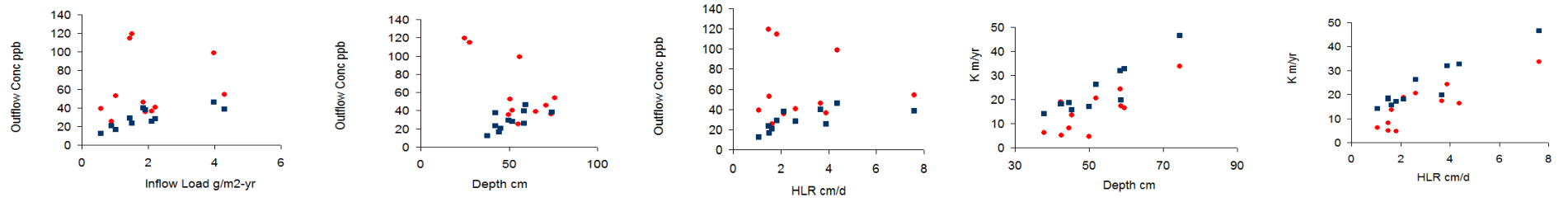
STA-34 [Details](#)



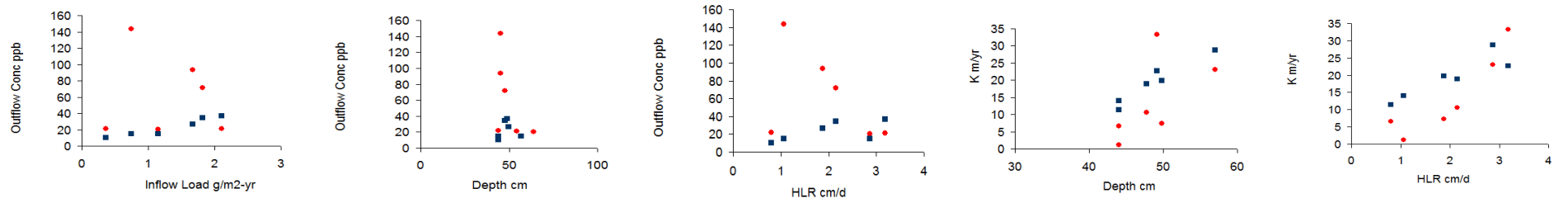
STA-2, Cells 1-3 [Details](#)



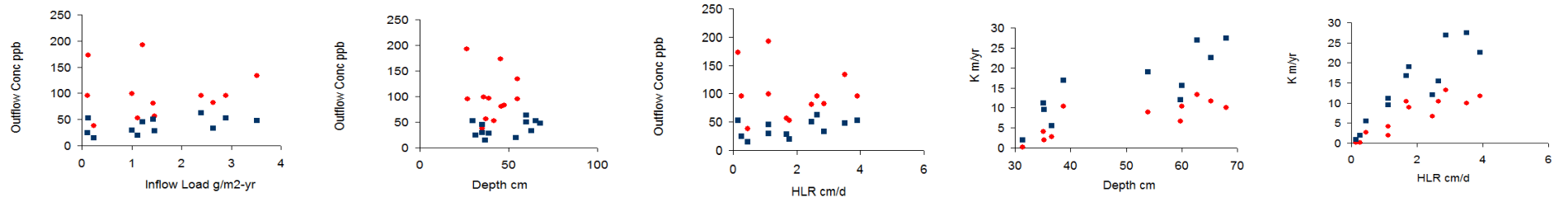
STA-1W [Details](#)



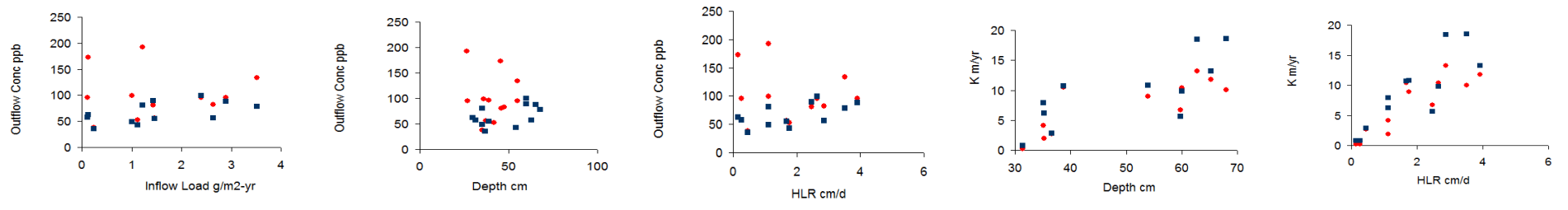
STA-1E, West & Central Flow Paths [Details](#)



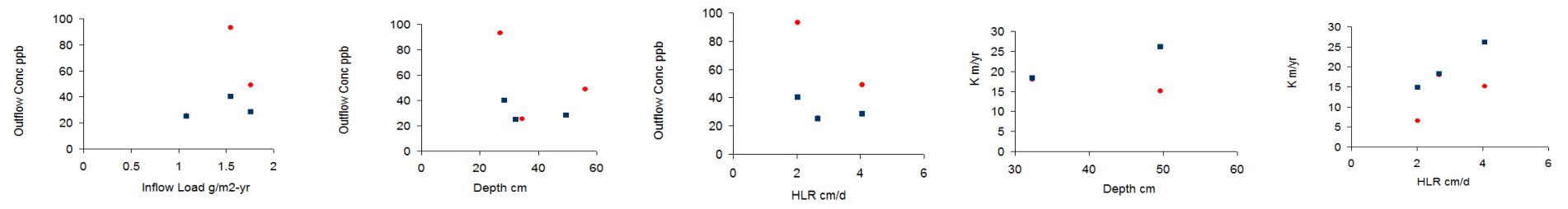
STA-5, North & Central Flow Paths, PEW Calibrations [Details](#)



STA-5, North & Central Flow Paths, Emergent Calibration [Details](#)



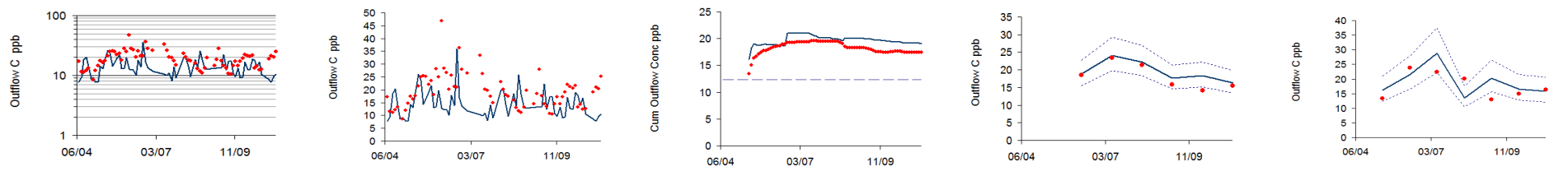
STA-6, Cells 2, 3, & 5 [Details](#)



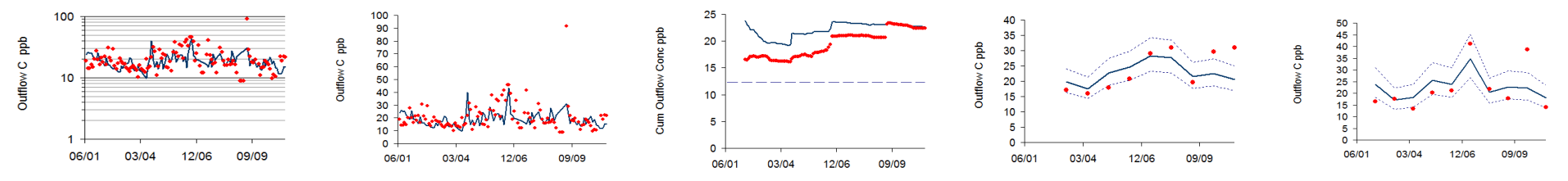
FWM Outflow P Concentration vs. Time Scale

30-Days: Log	30-Days	360-Days	720-Days	Cumulative
--------------	---------	----------	----------	------------

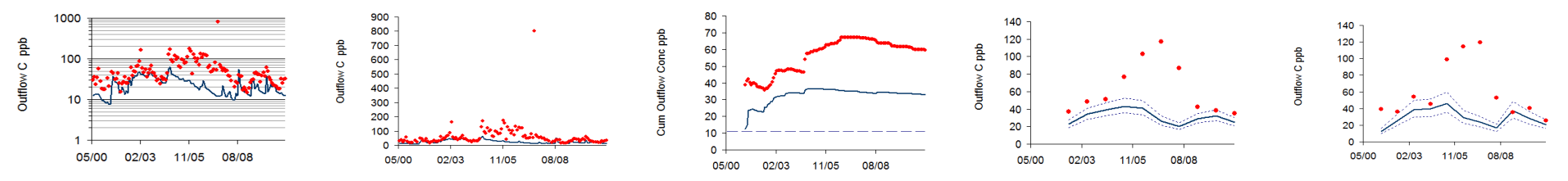
STA-34 [Details](#) [Operation](#) [Performance](#)



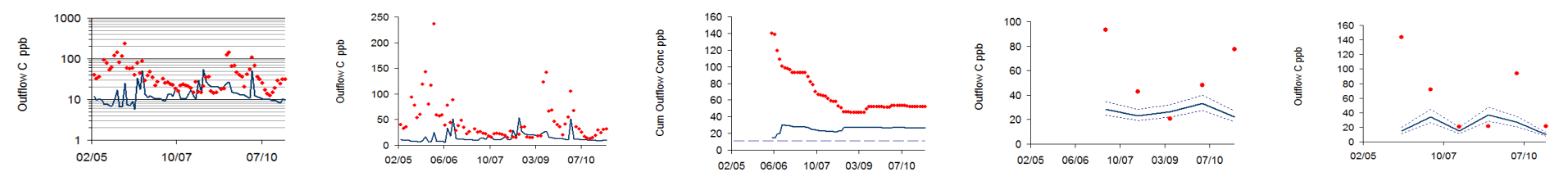
STA-2, Cells 1-3 [Details](#) [Operation](#) [Performance](#)



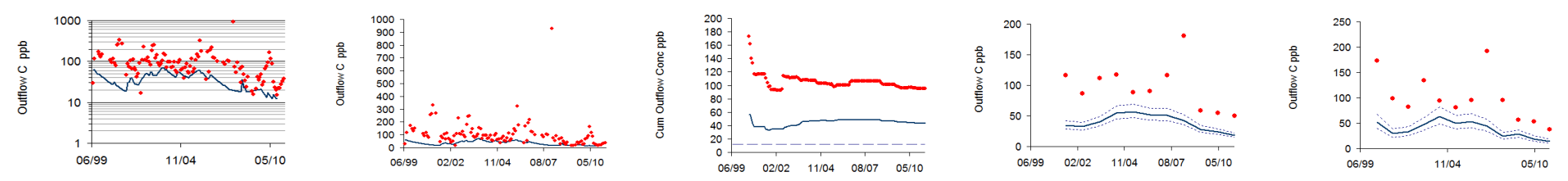
STA-1W [Details](#) [Operation](#) [Performance](#)



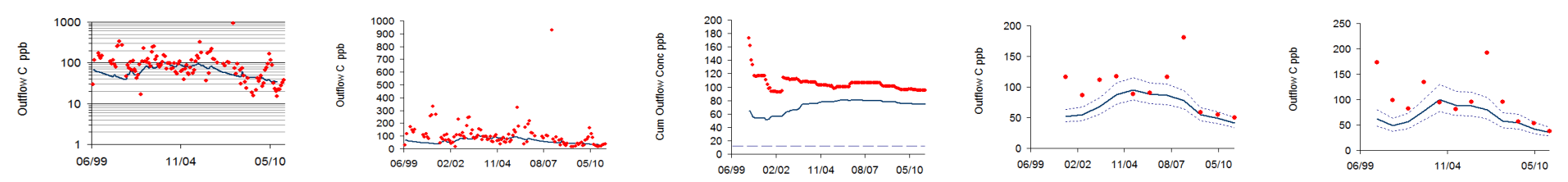
STA-1E, West & Central Flow Paths [Details](#) [Operation](#) [Performance](#)



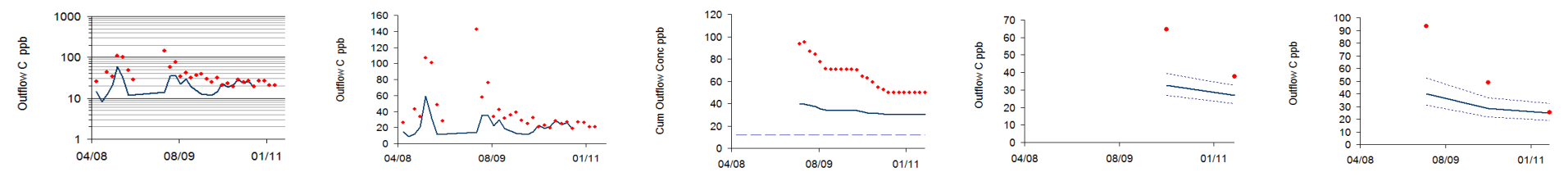
STA-5, North & Central Flow Paths, PEW Calibration [Details](#) [Operation](#) [Performance](#)



STA-5, North & Central Flow Paths, Emergent Calibration [Details](#) [Operation](#) [Performance](#)



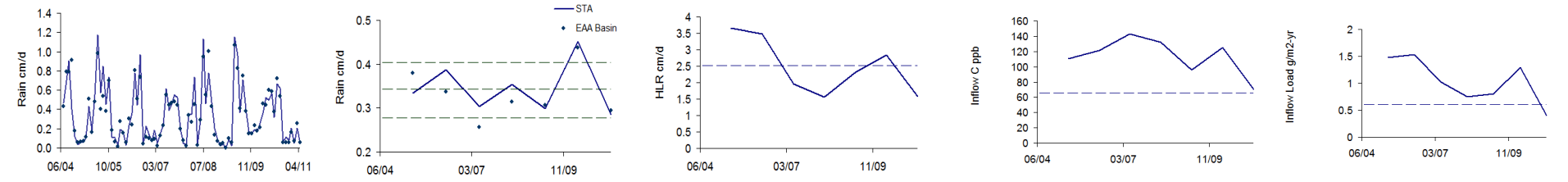
STA-6, Cells 2, 3, & 5 [Details](#) [Operation](#) [Performance](#)



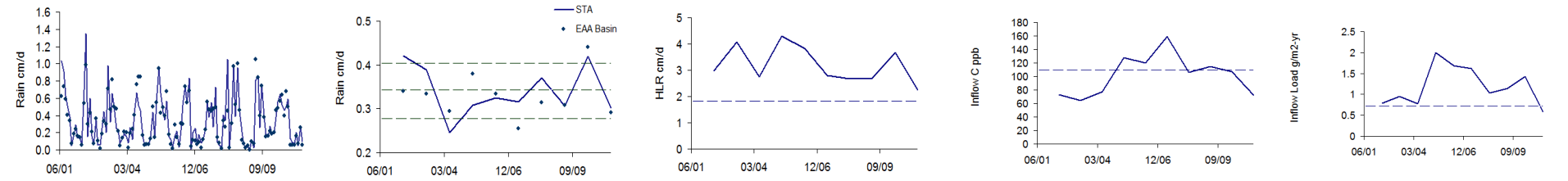
360-Day Rainfall & Inflow Series Dashed Lines = RS Design Mean

Rainfall - 30 Days	Rainfall - 360 Days	Hydraulic Load	Inflow P Conc	Inflow P Load
--------------------	---------------------	----------------	---------------	---------------

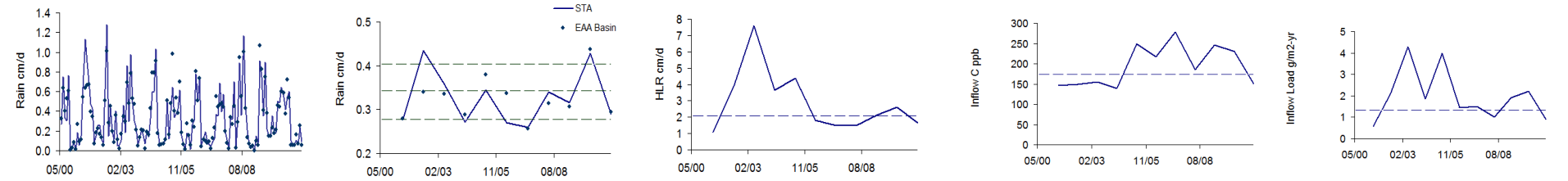
STA-34 [Details](#) [Operation](#) [Performance](#)



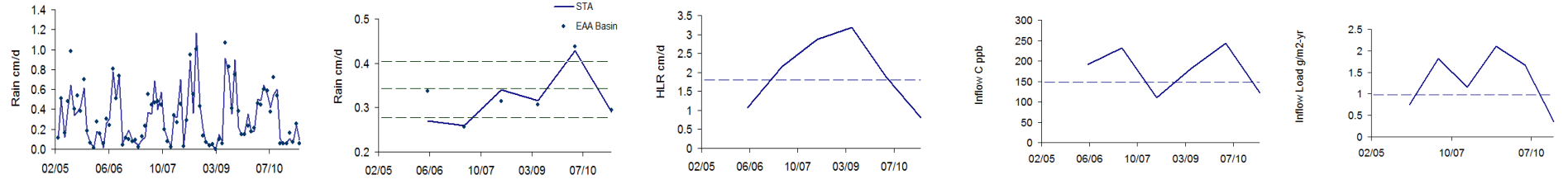
STA-2, Cells 1-3 [Details](#) [Operation](#) [Performance](#)



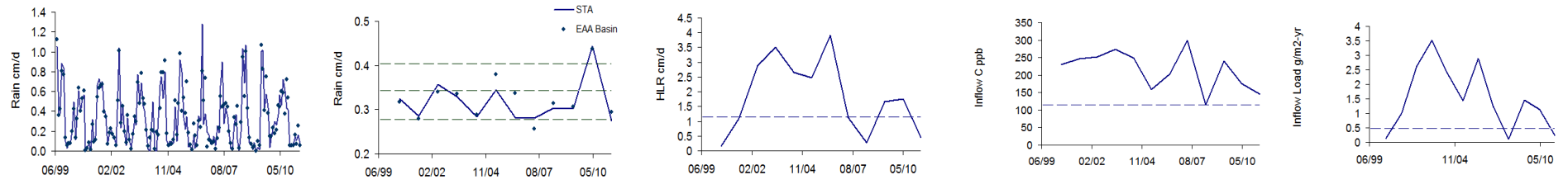
STA-1W [Details](#) [Operation](#) [Performance](#)



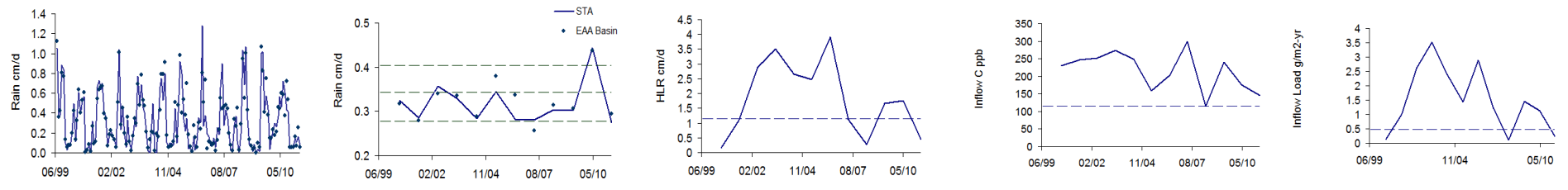
STA-1E, West & Central Flow Paths [Details](#) [Operation](#) [Performance](#)



STA-5, North & Central Flow Paths, PEW Calibration [Details](#) [Operation](#) [Performance](#)



STA-5, North & Central Flow Paths, Emergent Calibration [Details](#) [Operation](#) [Performance](#)



STA-6, Cells 2, 3, & 5 [Details](#) [Operation](#) [Performance](#)

