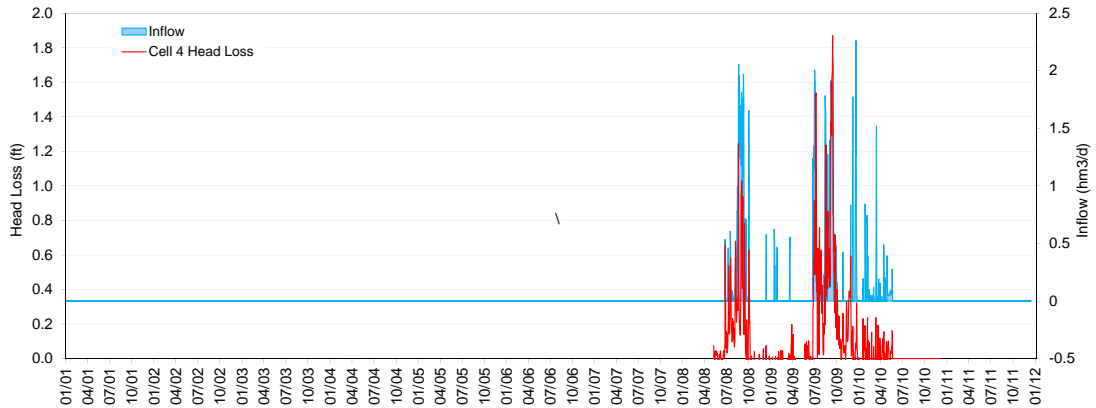
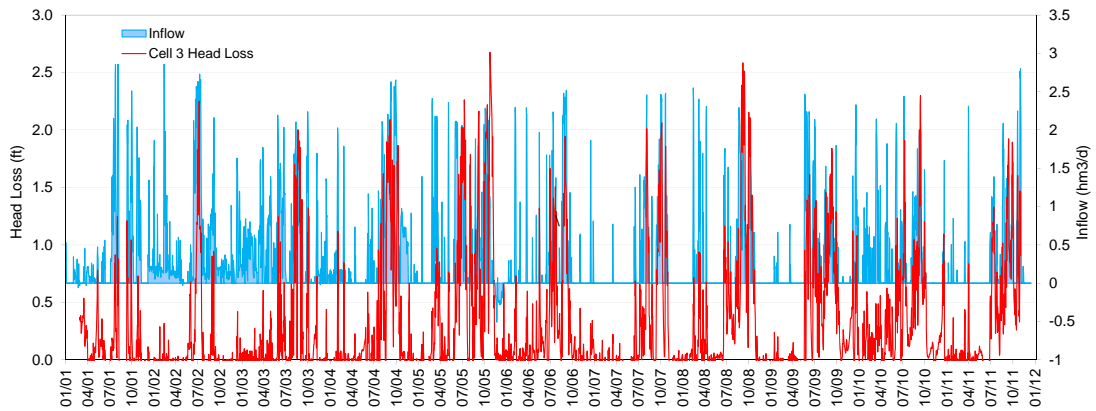
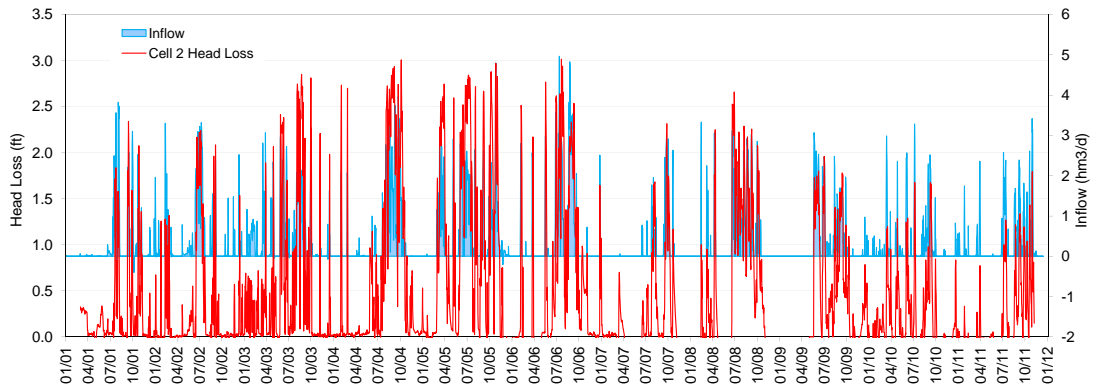
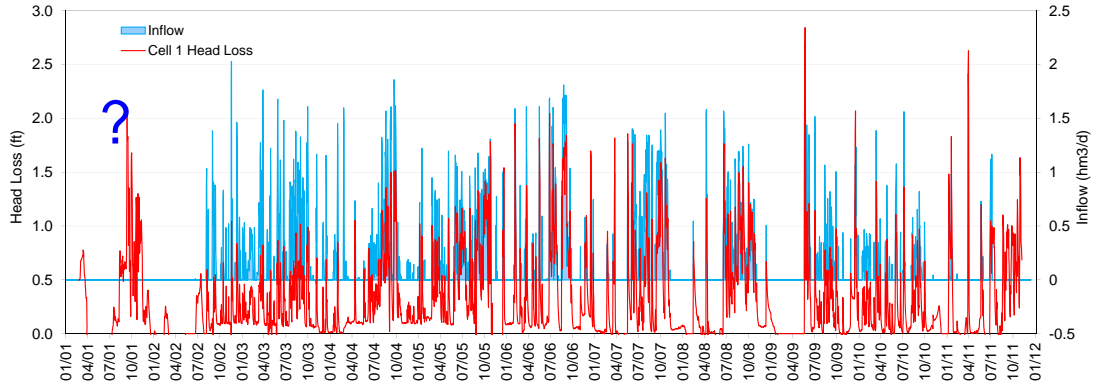
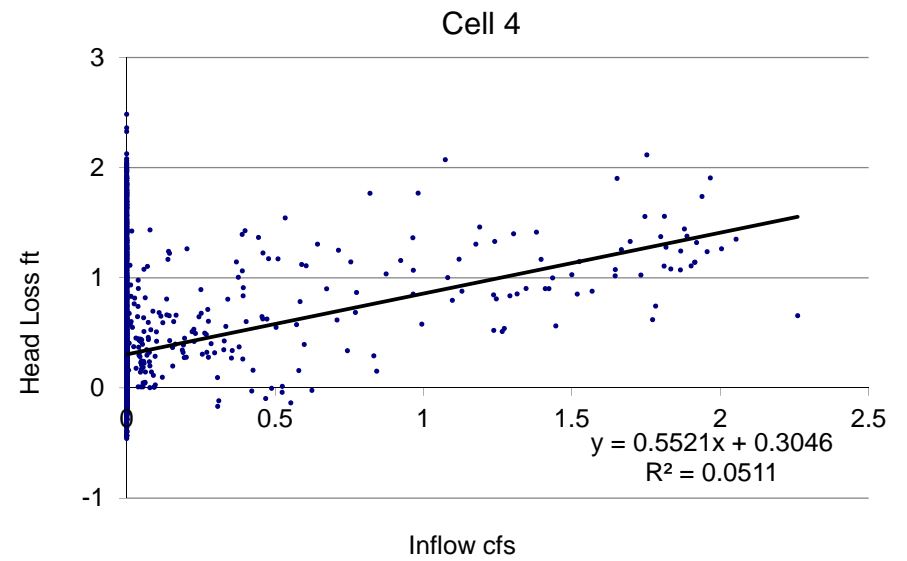
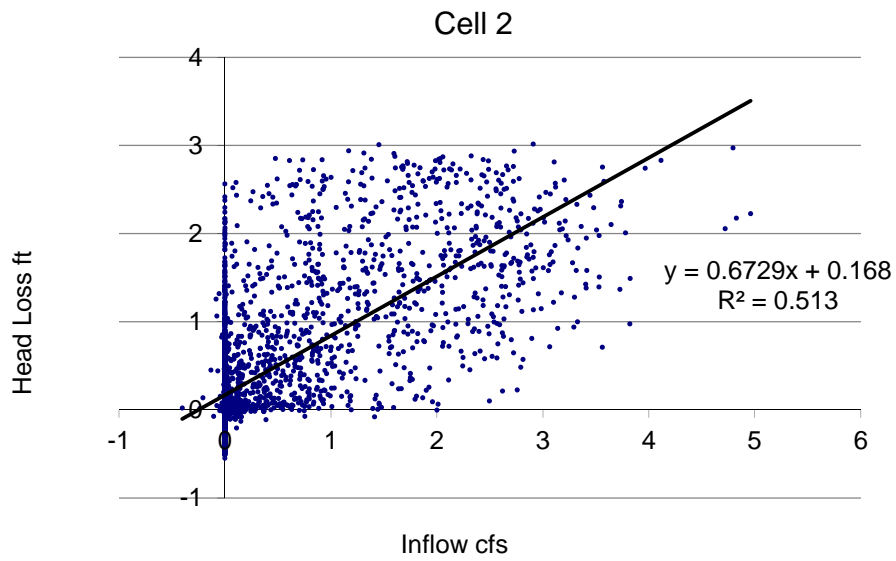
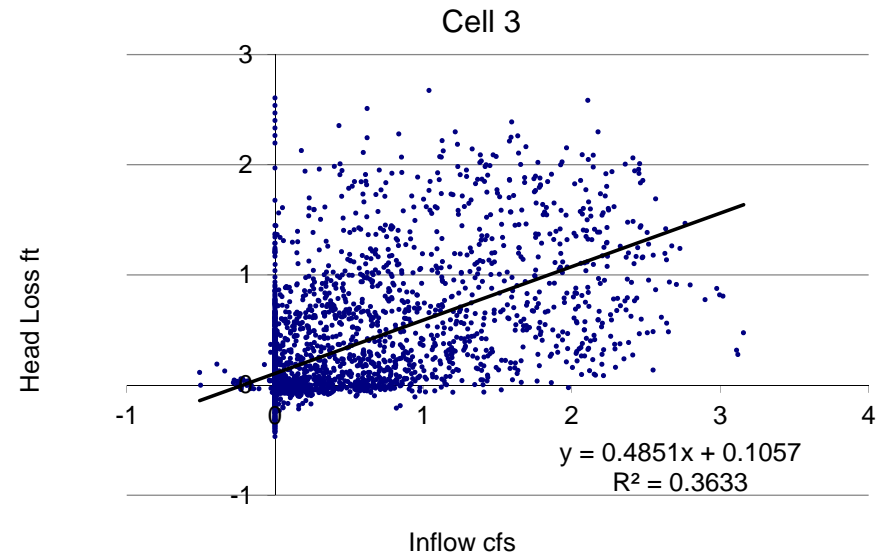
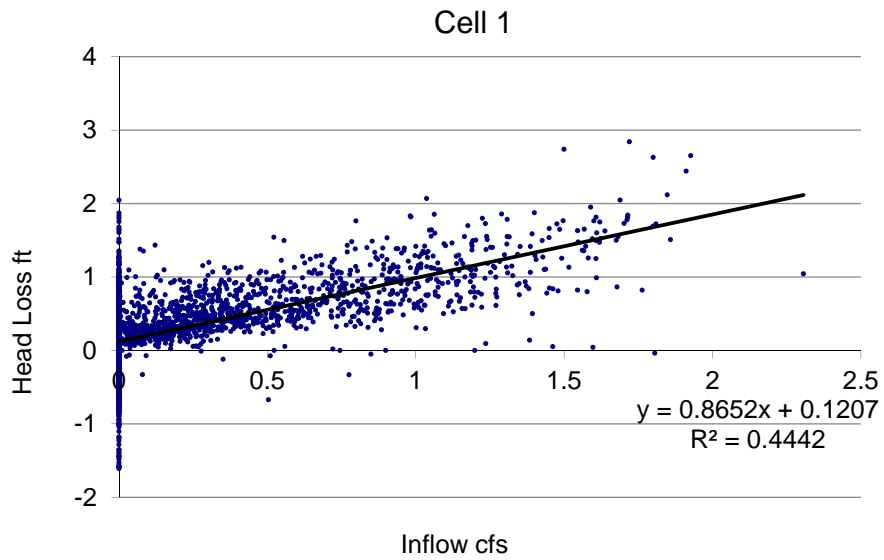


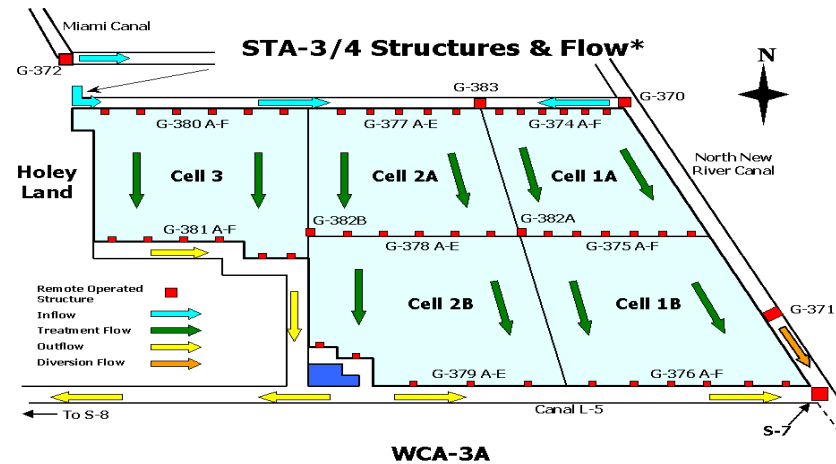
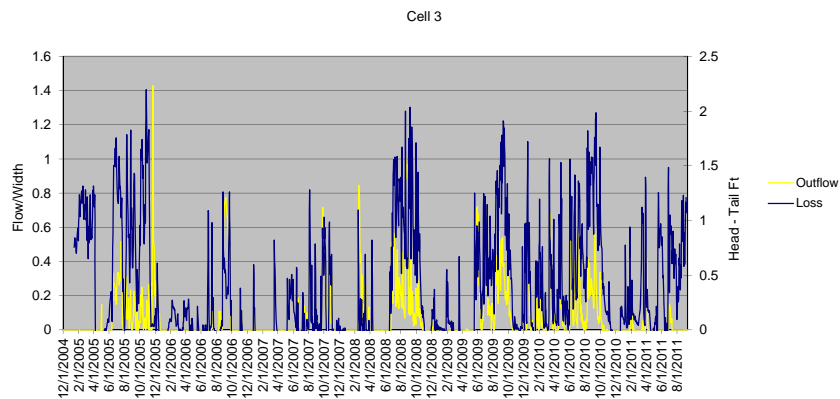
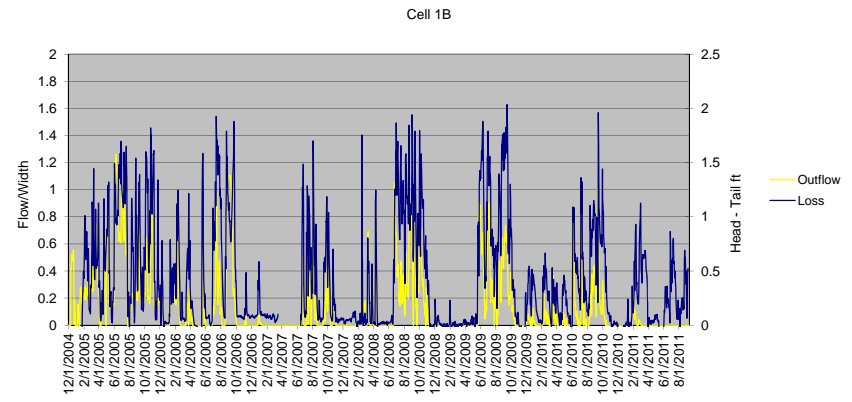
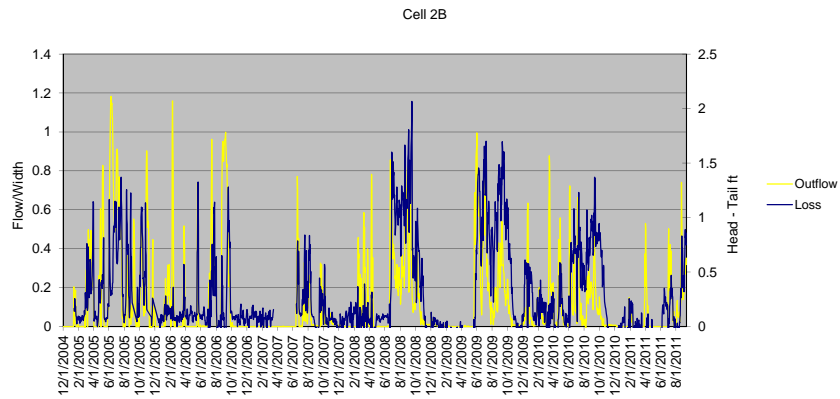
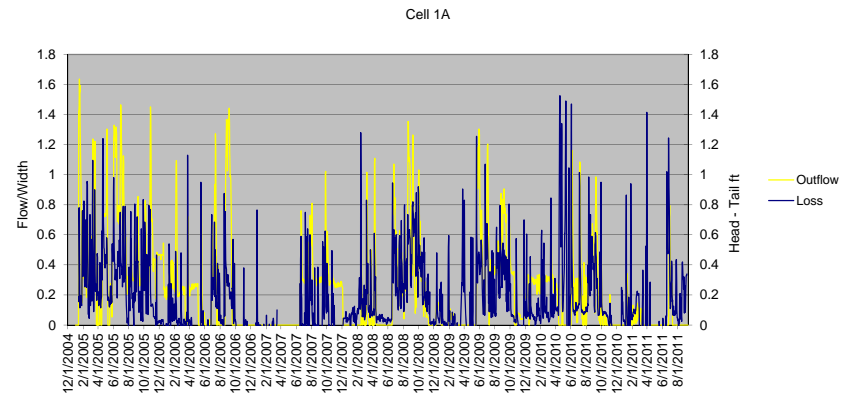
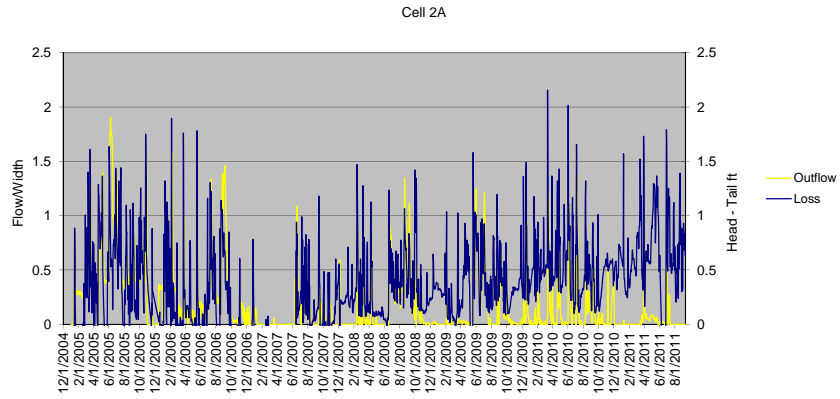
STA2 Cell Inflows & Head Loss



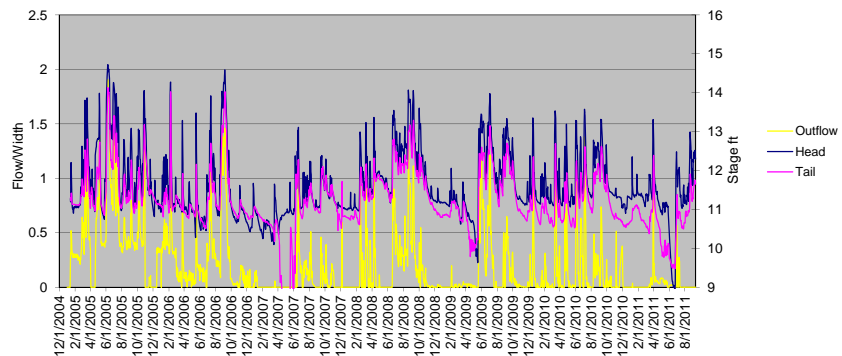
Head (Inflow Tailwater Stage - Outflow Headwater Stage) vs. Inflow

STA2

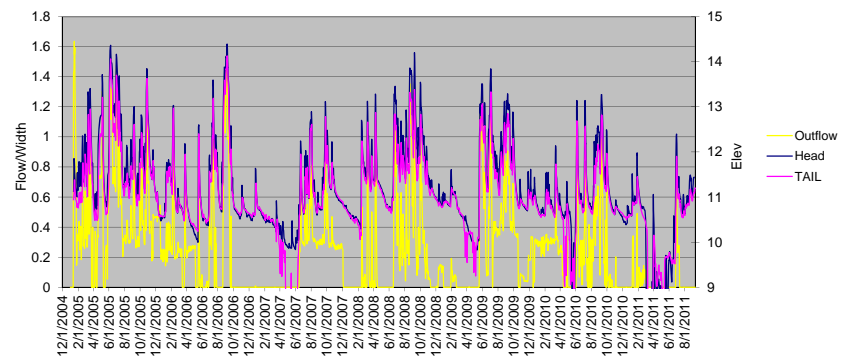




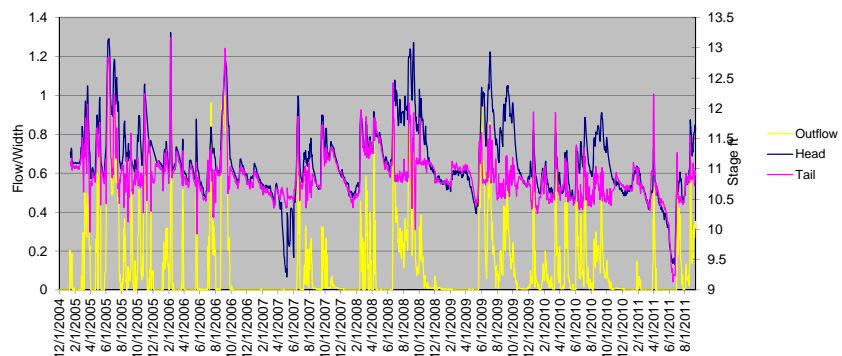
Cell 2A



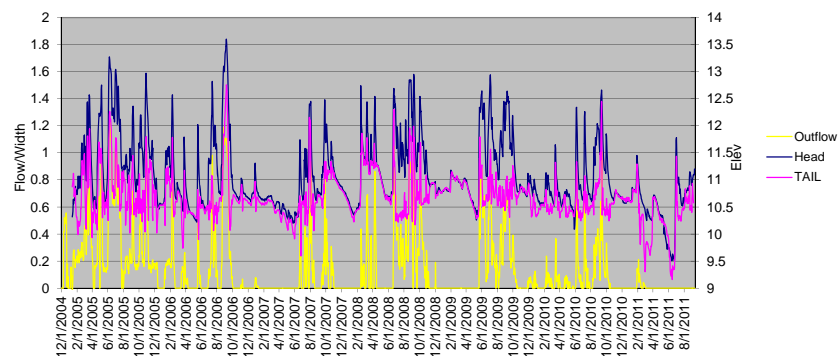
Cell 1A



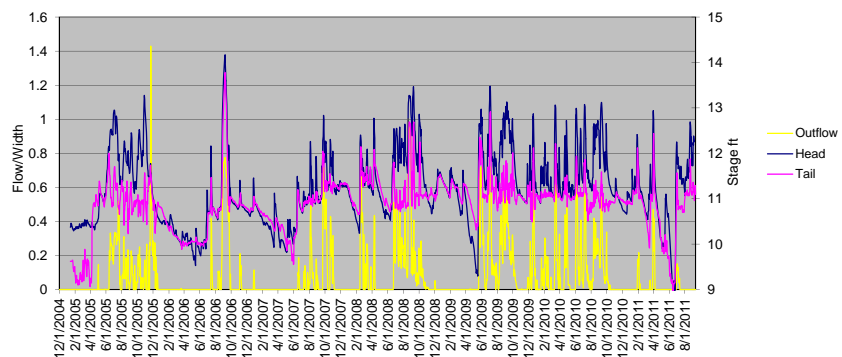
Cell 2B



Cell 1B

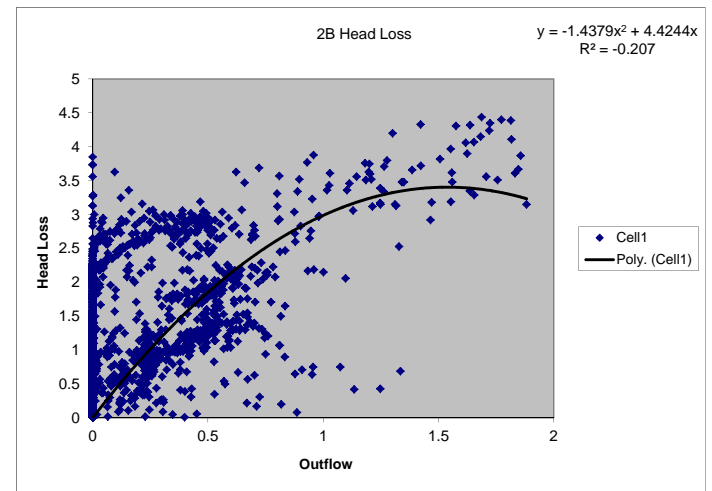
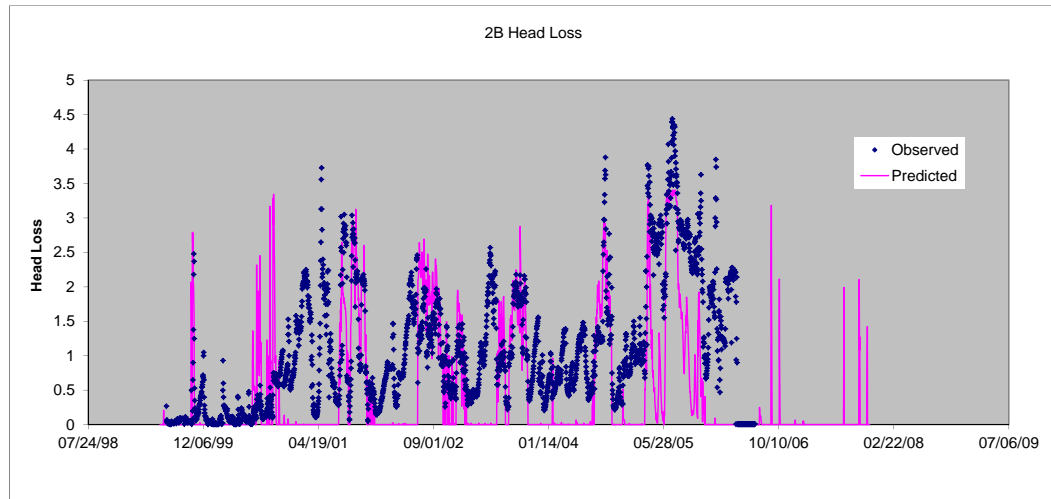
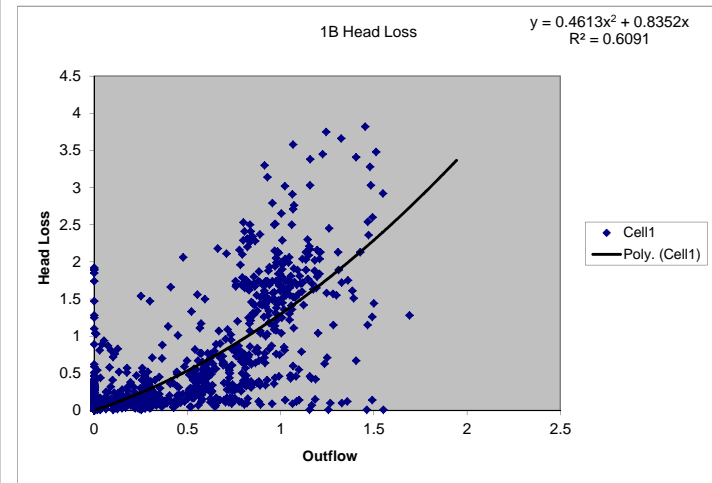
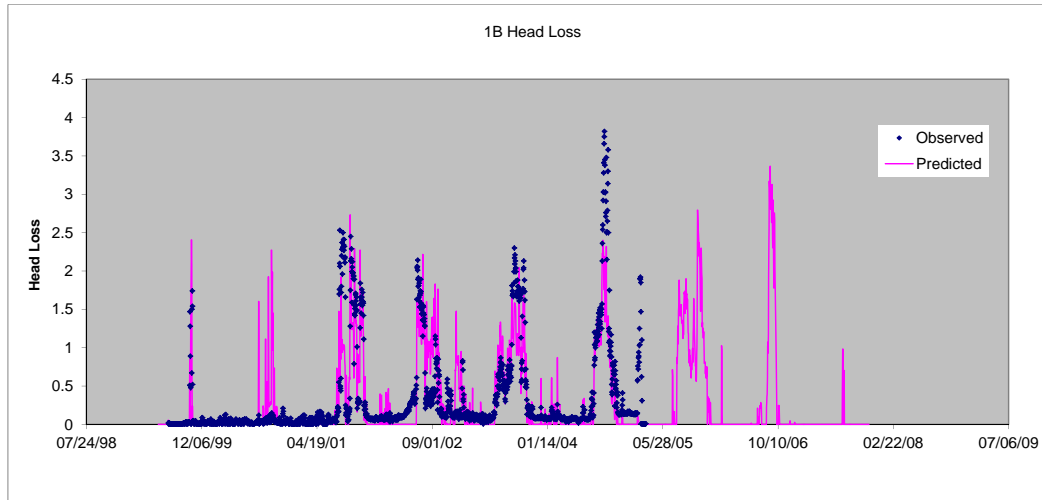


Cell 3



Head Loss (Inflow Tailwater - Outflow Headwater) vs. Outflow

STA-5



Head (Inflow Tail - Outflow Headwater) vs. Flow

STA-1East, Cells 3, 4N, 4S

