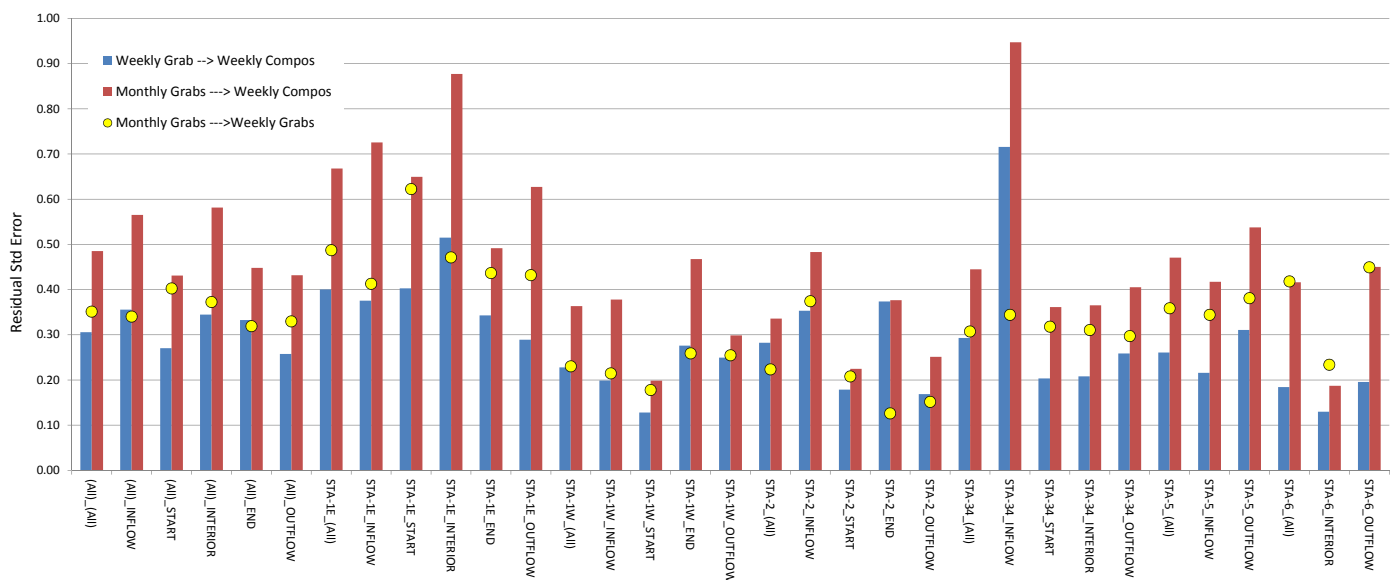
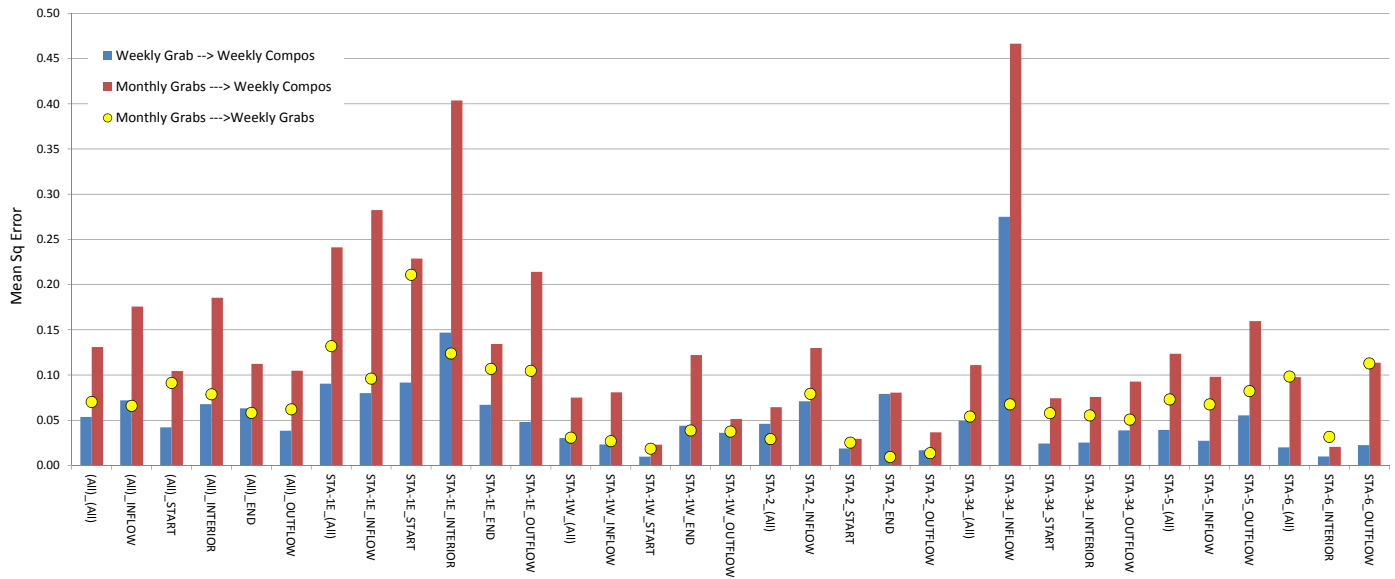
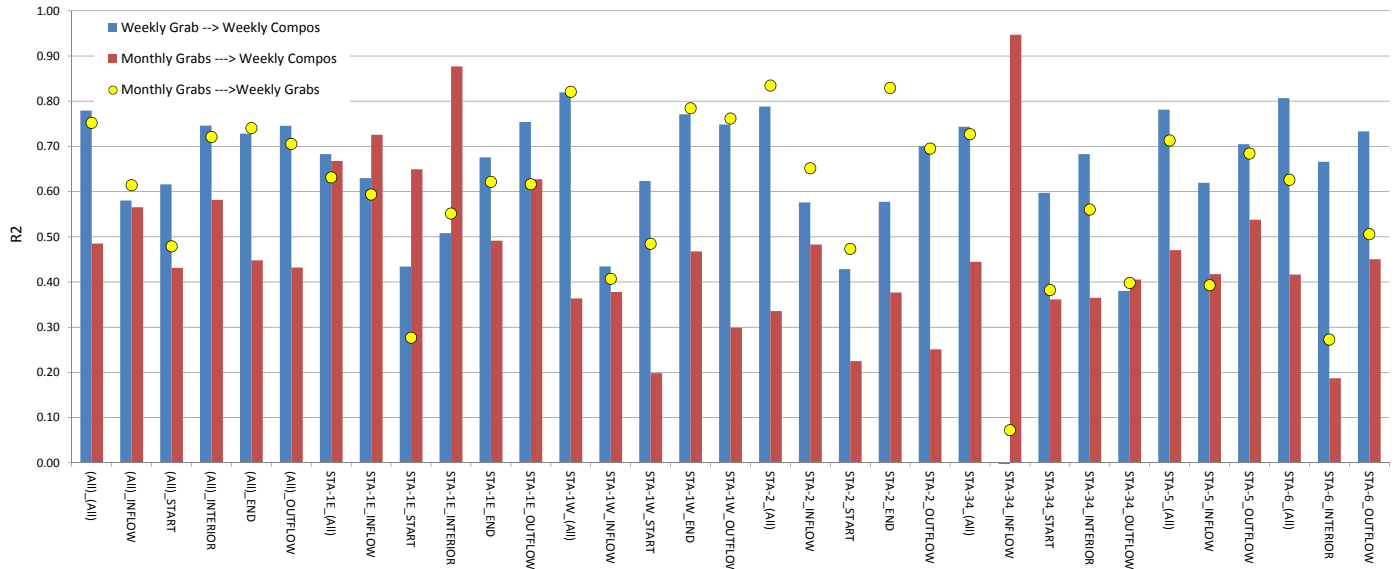
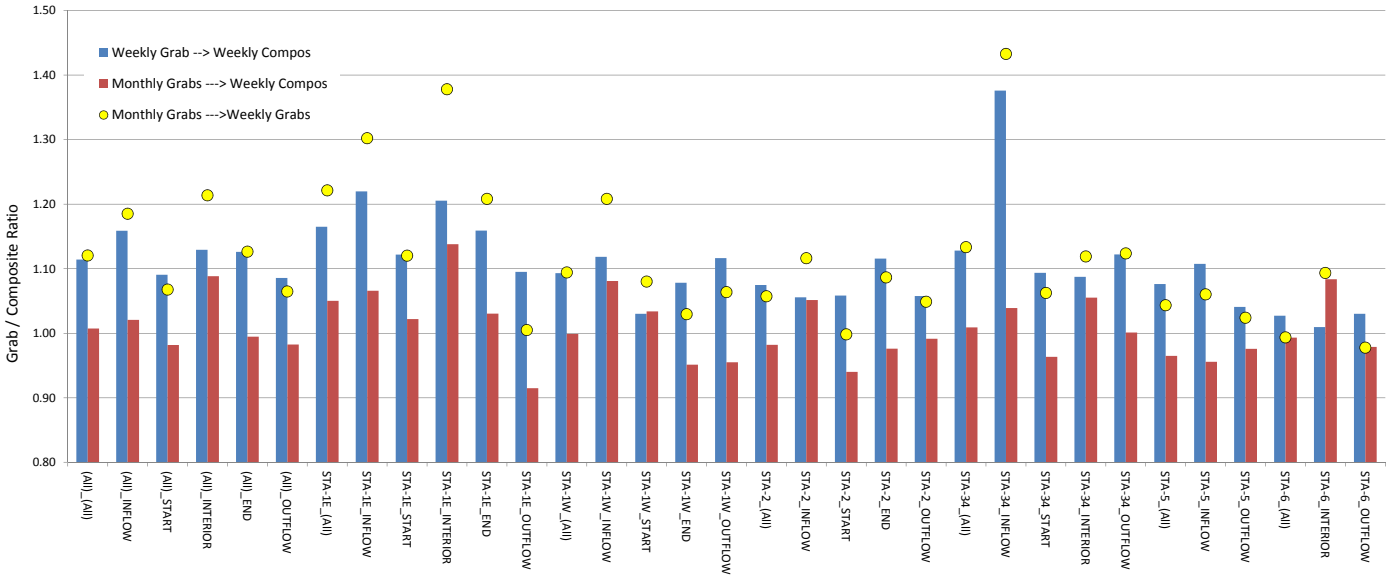


Comparisons of Water Year FWM Concs Computed from Weekly Composites, Weekly Grabs, & Monthly Grabs vs. STA & Site Category





STA	Category	Label	Count	Weekly Grab --> Weekly Compos				Monthly Grabs --> Weekly Compos				Monthly Grabs --> Weekly Grabs			
				Ratio	RMSE	Std Error	B2	Ratio	RMSE	Std Error	B2	Ratio	RMSE	Std Error	B2
(All)	(All)	(All)_(All)	513	1.11	0.054	31%	78%	1.12	0.131	49%	67%	1.01	0.070	35%	0.75
(All)	INFLOW	(All)_INFLOW	110	1.16	0.072	36%	58%	1.19	0.176	57%	38%	1.02	0.066	34%	0.61
(All)	START	(All)_START	108	1.09	0.042	27%	62%	1.07	0.104	43%	42%	0.98	0.091	40%	0.48
(All)	INTERIOR	(All)_INTERIOR	76	1.13	0.068	34%	75%	1.21	0.186	58%	61%	1.09	0.079	37%	0.72
(All)	END	(All)_END	73	1.13	0.063	33%	73%	1.13	0.112	45%	65%	0.99	0.058	32%	0.74
(All)	OUTFLOW	(All)_OUTFLOW	146	1.09	0.038	26%	75%	1.06	0.105	43%	60%	0.98	0.062	33%	0.71
STA-1E	(All)	STA-1E_(All)	130	1.16	0.091	40%	68%	1.22	0.241	67%	52%	1.05	0.132	49%	0.63
STA-1E	INFLOW	STA-1E_INFLOW	22	1.22	0.080	38%	63%	1.30	0.282	73%	37%	1.07	0.096	41%	0.59
STA-1E	START	STA-1E_START	36	1.12	0.092	40%	43%	1.12	0.229	65%	16%	1.02	0.211	62%	0.28
STA-1E	INTERIOR	STA-1E_INTERIOR	30	1.21	0.147	51%	51%	1.38	0.404	88%	25%	1.14	0.124	47%	0.55
STA-1E	END	STA-1E_END	34	1.16	0.067	34%	68%	1.21	0.134	49%	56%	1.03	0.107	44%	0.62
STA-1E	OUTFLOW	STA-1E_OUTFLOW	8	1.10	0.048	29%	75%	1.00	0.214	63%	53%	0.91	0.105	43%	0.62
STA-1W	(All)	STA-1W_(All)	55	1.09	0.030	23%	82%	1.09	0.075	36%	73%	1.00	0.031	23%	0.82
STA-1W	INFLOW	STA-1W_INFLOW	16	1.12	0.023	20%	43%	1.21	0.081	38%	0%	1.08	0.027	21%	0.41
STA-1W	START	STA-1W_START	7	1.03	0.010	13%	62%	1.08	0.023	20%	43%	1.03	0.019	18%	0.48
STA-1W	END	STA-1W_END	18	1.08	0.044	28%	77%	1.03	0.122	47%	64%	0.95	0.039	26%	0.78
STA-1W	OUTFLOW	STA-1W_OUTFLOW	14	1.12	0.036	25%	75%	1.06	0.051	30%	70%	0.96	0.038	25%	0.76
STA-2	(All)	STA-2_(All)	69	1.07	0.046	28%	79%	1.06	0.064	34%	75%	0.98	0.029	22%	0.83
STA-2	INFLOW	STA-2_INFLOW	16	1.06	0.071	35%	58%	1.12	0.130	48%	45%	1.05	0.079	37%	0.65
STA-2	START	STA-2_START	24	1.06	0.019	18%	43%	1.00	0.029	22%	30%	0.94	0.025	21%	0.47
STA-2	END	STA-2_END	21	1.12	0.079	37%	58%	1.09	0.080	38%	57%	0.98	0.009	13%	0.83
STA-2	OUTFLOW	STA-2_OUTFLOW	8	1.06	0.017	17%	70%	1.05	0.037	25%	57%	0.99	0.014	15%	0.70
STA-34	(All)	STA-34_(All)	164	1.13	0.049	29%	74%	1.13	0.111	44%	63%	1.01	0.054	31%	0.73
STA-34	INFLOW	STA-34_INFLOW	16	1.38	0.275	72%	-36%	1.43	0.466	95%	-68%	1.04	0.068	34%	0.07
STA-34	START	STA-34_START	41	1.09	0.024	20%	60%	1.06	0.074	36%	33%	0.96	0.058	32%	0.38
STA-34	INTERIOR	STA-34_INTERIOR	43	1.09	0.025	21%	68%	1.12	0.076	37%	48%	1.06	0.055	31%	0.56
STA-34	OUTFLOW	STA-34_OUTFLOW	64	1.12	0.039	26%	38%	1.12	0.093	41%	8%	1.00	0.051	30%	0.40
STA-5	(All)	STA-5_(All)	74	1.08	0.039	26%	78%	1.04	0.124	47%	64%	0.96	0.073	36%	0.71
STA-5	INFLOW	STA-5_INFLOW	40	1.11	0.027	22%	62%	1.06	0.098	42%	32%	0.96	0.068	34%	0.39
STA-5	OUTFLOW	STA-5_OUTFLOW	34	1.04	0.055	31%	70%	1.02	0.160	54%	53%	0.98	0.082	38%	0.68
STA-6	(All)	STA-6_(All)	21	1.03	0.020	18%	81%	0.99	0.098	42%	60%	0.99	0.098	42%	0.63
STA-6	INTERIOR	STA-6_INTERIOR	3	1.01	0.010	13%	67%	1.09	0.021	19%	53%	1.08	0.032	23%	0.27
STA-6	OUTFLOW	STA-6_OUTFLOW	18	1.03	0.022	20%	73%	0.98	0.114	45%	44%	0.98	0.113	45%	0.51